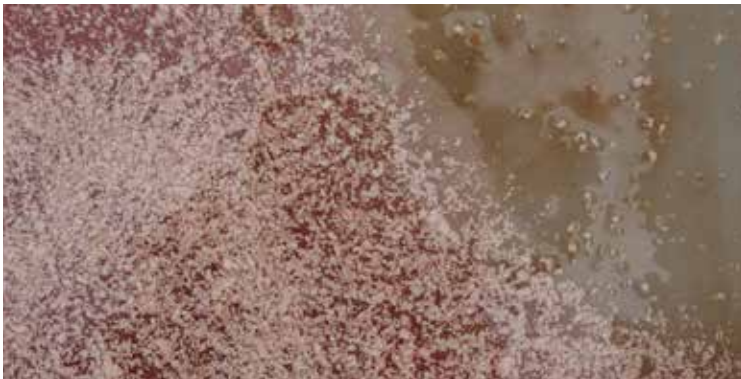


# Tau kupu fakamaama ke he tau veve

## Fakaaoga fēfē e huhua bokashi haau

Ko e fano ni e lahi mo e lanu he puke ke tau faga mena kai ka tuku e koe ki loto he pakete bokashi haau. Lahi atu e puke ka moua mai he tau fua lakau mo e tau lauakau kai, ka e fa nākai fai puke ka moua mai he falu a mena kai.



Tafe hifo e huhua ti mau he muimui pakete. Tuga ne fakakite he fakatino nei, kua tū fuluputi tea a luga he puke. Ko e fakakiteaga mitaki a nai.



Takatakahao tumau e puke i loto he muimui pakete bokashi haau. Fakatafe tumau e puke ka hoko ke ua po ke tolu e aho.

## Fakaaoga fēfē e au e puke nei?

### I loto he kaina



Ligiligi fakahako e tau puke bokashi ki loto he tau halavai fakatafe, mo e falevao, po ke halavai fakatafe he fale koukou. Fakaaoga tumau e tau tauteaga nei, ke lagomatai ke tamate aki e tau moko fuluputi mo e fakatokolalo e namu kelea.

### I loto he katene



Mahuiga lahi e puke bokashi ke lata moe kelekele katene haau. Fakaaoga pe he nei e puke bokashi mo fagai fetalaisa e katene haau. Lalafi e puke bokashi ke he fuafuaaga he 1:100, pehē a ia, ko e 2–3 e tipunu kai ke he 5 e lita he valavai, ti fuifui aki e kelekele po ke matapatu he tau akau. Maeke foki a koe ke fakaaoga e puke bokashi ke pamu aki e tau laukou, fakaaoga e huihuiaga 1:500–1:1000, pehē a ia, 1–2 e tipunu ti ke he 5 e lita he valavai.

*Kua mailoga he Fono Maaga Okalana a Zing Bokashi™, ne ha ha i ai e koloa loto matala kua fakaaoga ke he kamataaga he laupepa fakatonutonu nei.*

► **Ke iloa e falu foki:** vilo e 09 301 0101  
po ke ahiahi atu ke he [www.aucklandcouncil.govt.nz](http://www.aucklandcouncil.govt.nz)